



Copenhagen International School Nordhavn

SOLAR-POWERED SCHOOL OF THE FUTURE

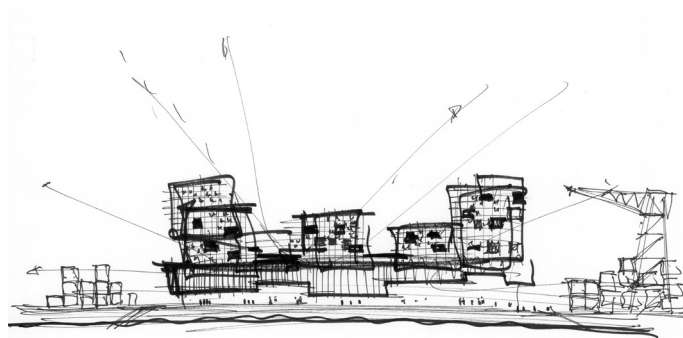
CF	MØLLER
ARCHITECTS	

Contents

Solar-powered School of the Future	4
Linked with the Public Sphere	8
Secure Environment	16
12,000 Solar Panels	20
Core Values	24
Company Profile	25
Contact	27

Solar-powered School of the Future

CIS Nordhavn is a new school building for the Copenhagen International School, located on a prominent site in Copenhagen's new Nordhavn district. The 25,000 m² school building is Copenhagen's largest school, and accommodates 1,200 students and 280 employees.



FACTS	
Address: Levantkaj, Nordhavnen, Copenhagen, Denmark	Façades - solar panels: SolarLab
Client: Property Foundation Copenhagen International School (ECIS)	Energy Management: KT Electric Aalborg and DTEK
Architect: C.F. Møller Architects	Main Contractor: Per Aarsleff
Landscape architect: C.F. Møller Landscape	Information and Communications Technologies: CN3
Engineer: Niras	Size: 26,000 m ² (1200 students)
Façades - windows: Eiler Thomsen Alufacader	Year: 2013-2017

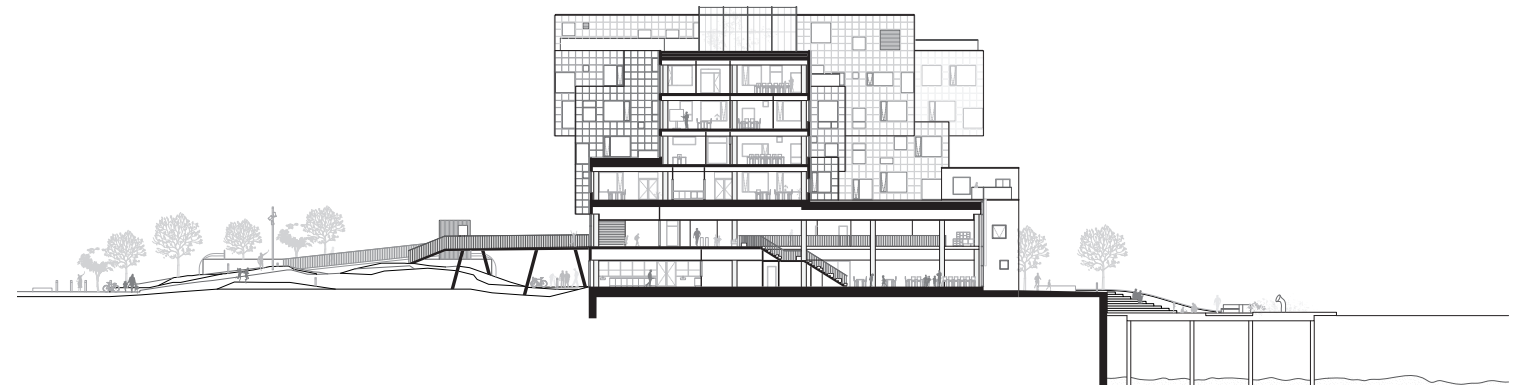






Linked with the Public Sphere

The modern educational architecture is designed to link the school premises with the public sphere in the urban environment, and give the school an open ambience. The promenade outside the school will become an urban port-side space providing opportunities for relaxation and various activities.



The main school building is subdivided into four smaller “towers”, ranging from five to seven storeys, each specially adapted to meet the needs of children at different stages of development. For example, the classrooms for the youngest pupils are particularly large: A full range of functions will take place in and around the classroom, each of which has designated green spaces and areas with drama/performance facilities, PE, etc. The subdivision of the school into four units facilitates community, identity and easy wayfinding.

A rooftop greenhouse on each tower, acting as hands-on eco-learning environments.



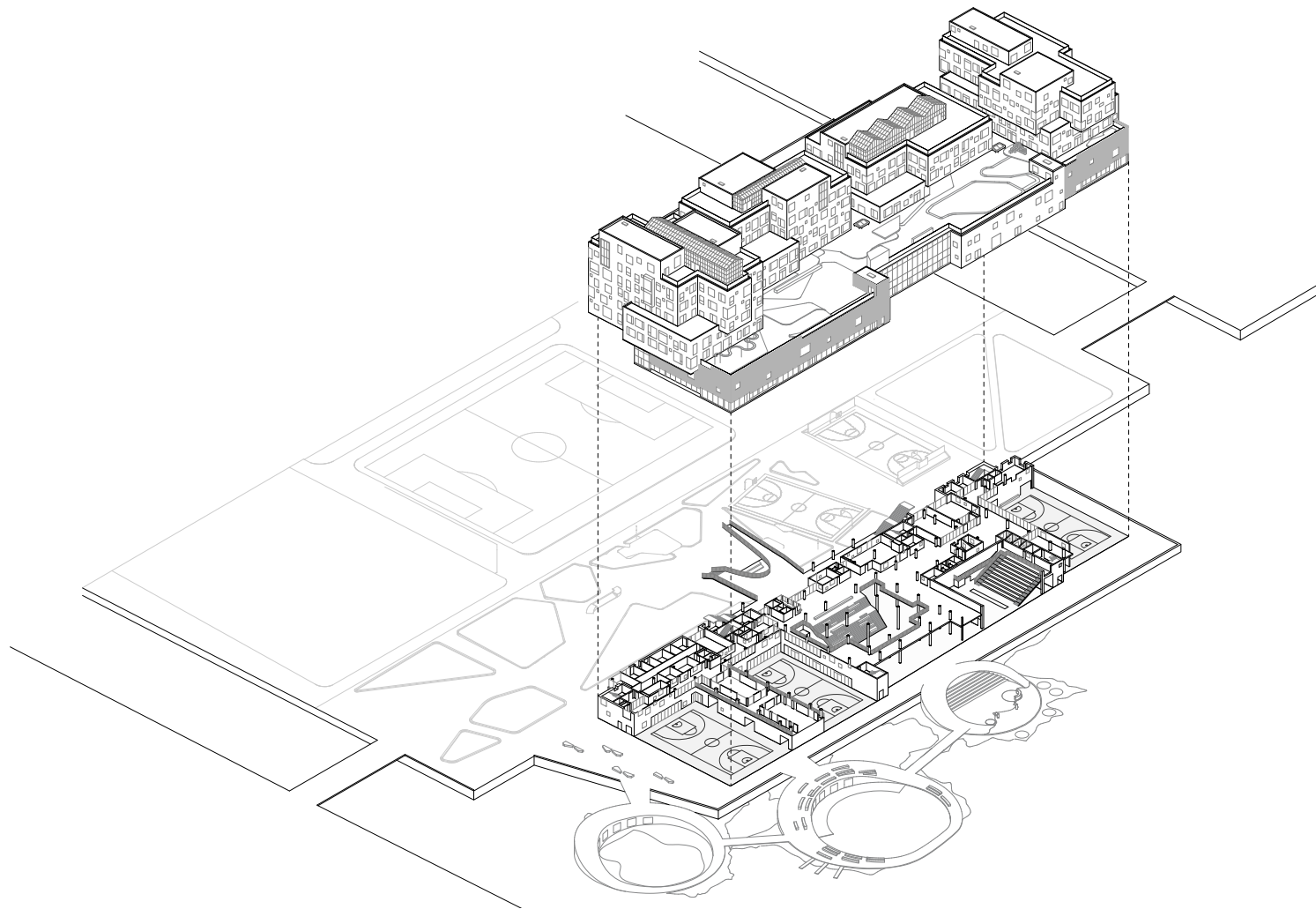


”

Our goal has been to make a holistic learning environment that supports Copenhagen International Schools mission, that states that together at CIS “we are learning to build community” both locally and internationally. Our goal has been to make a holistic learning environment that supports Copenhagen International Schools mission, that states that together at CIS “we are learning to build community” both locally and internationally.

C.F. Møller Architects





All four school units are built on top of the ground-floor base, which contains common and more extrovert activities, including a foyer, sports facilities, a canteen, a library and performance facilities. The classroom units can thus be closed-off outside normal school hours, while the common areas will remain open for school and local community events.



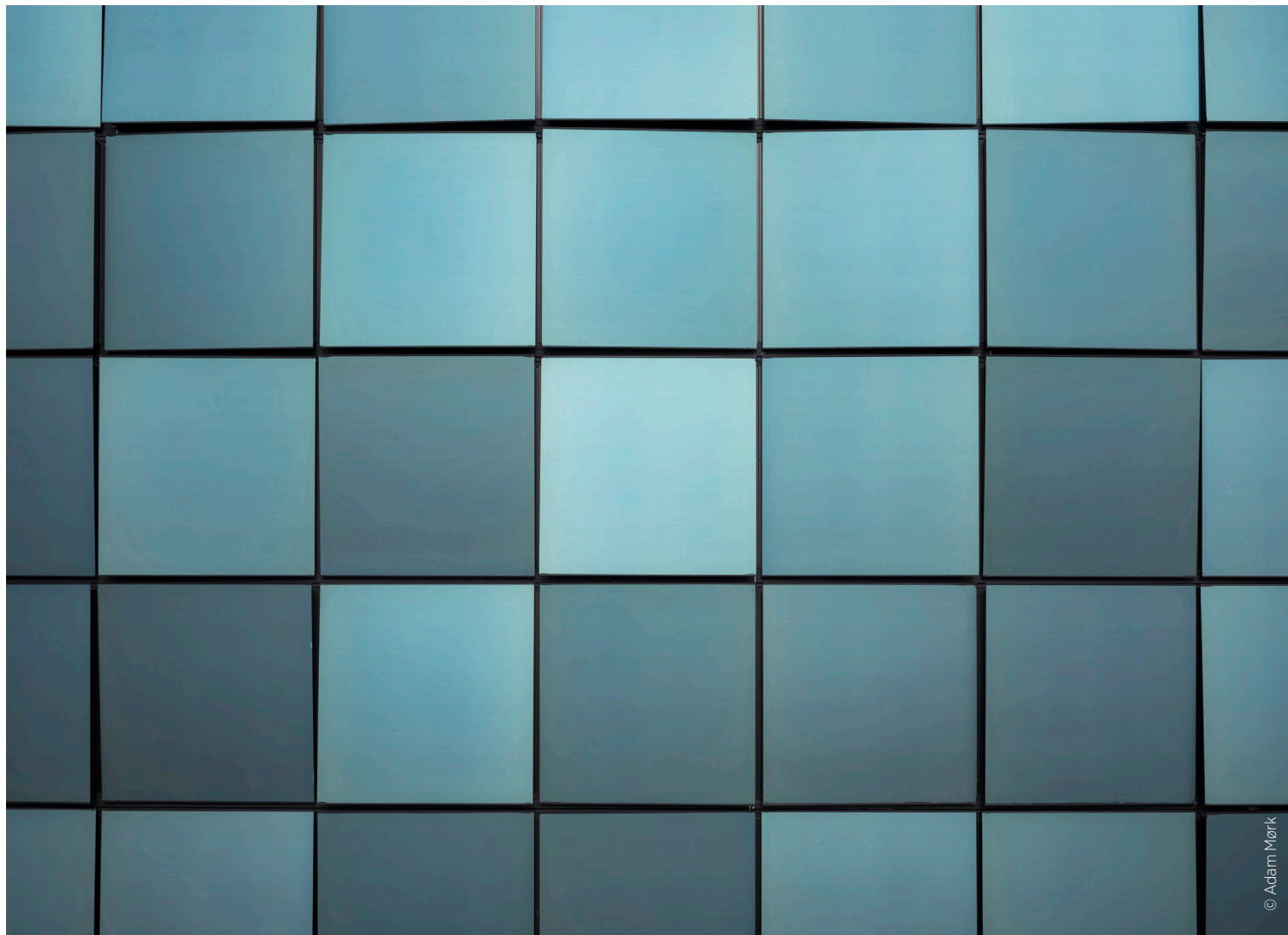


Secure Environment

The base includes a common roof terrace which will function as a school playground for the whole school – and the youngest pupils in particular. The elevated school playground provides a secure environment, which prevents students from coming too close to the water or from straying off the school premises.





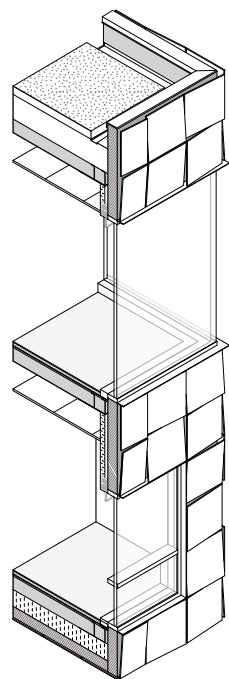


© Adam Mørk

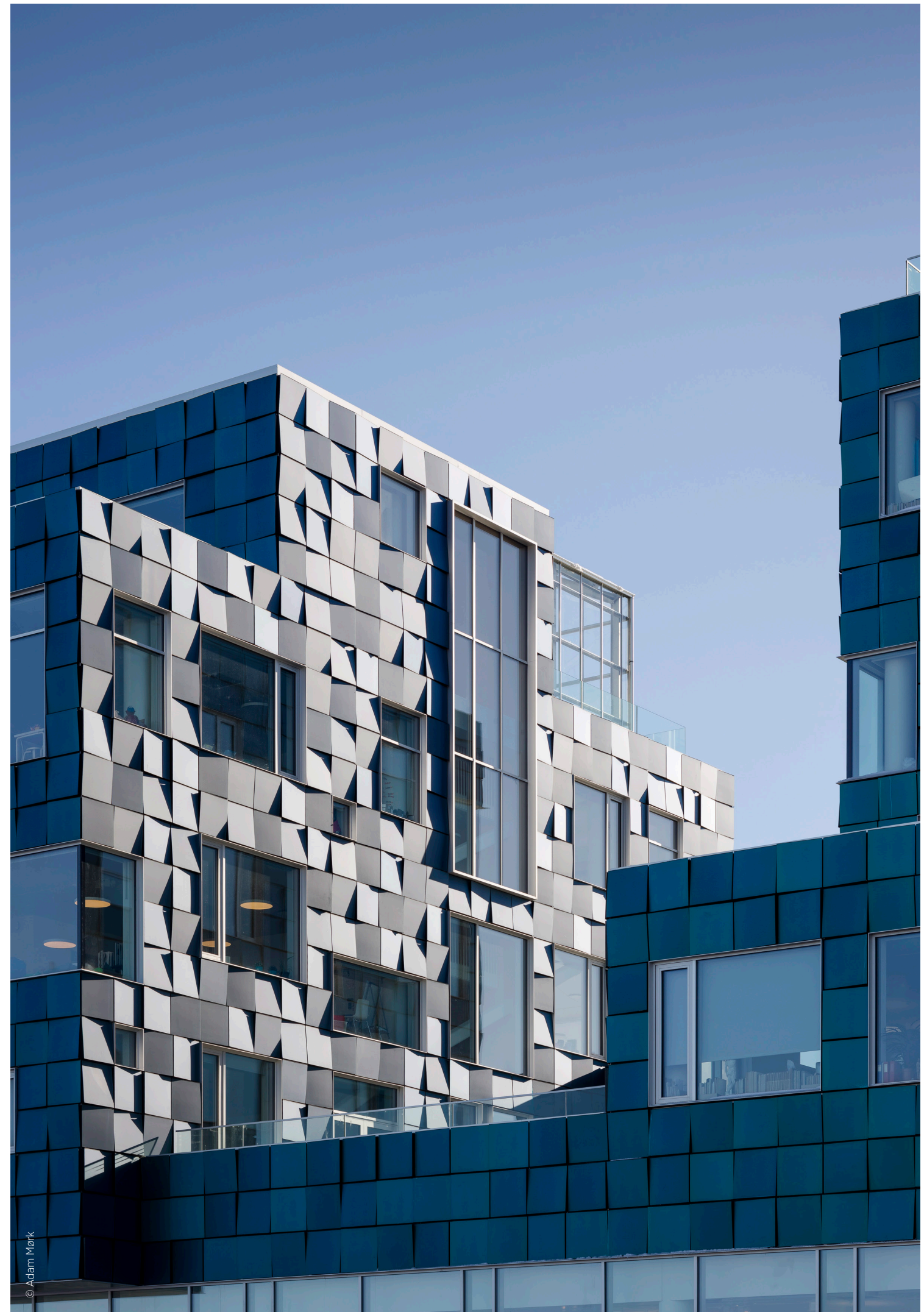
12,000 Solar Panels

The school building's unique facade is covered in 12,000 solar panels, each individually angled to create a sequin-like effect, which supply more than half of the school's annual electricity consumption. The solar cells cover a total area of 6,048 square meters, making it one of the largest building-integrated solar power plants in Denmark, estimated to produce over 200 MWh per year.

In addition to contributing to the school's green profile, the solar cells also form a permanent part of the school's curriculum, allowing students to monitor energy production and use data in physics and mathematics classes.



Isometric detail of solar panels 1:100



© Adam Mørk



Company Profile

C.F. Møller Architects is one of Scandinavia’s leading architectural firms, with 90 years of award-winning work in the Nordic region and worldwide. Every day we create architectural quality based on innovation, experience and Nordic values. This assures sustainable and aesthetic solutions with lasting value for clients, occupants and society.

A UNIQUE DESIGN APPROACH

Our design solutions are methodically and holistically created following a rigorous analysis of the local context. We look to set new global standards by fostering a design approach which uniquely integrates urban planning, landscape, architecture and design of specific building components.

We regard environmental concerns, resource-consciousness, healthy project finances, social responsibility and good craftsmanship as essential elements of our work. This ethos is fundamental to all our projects, a thread which runs from masterplanning to detail design.

Since our founding in Denmark in 1924, we have contributed significantly to the development of welfare societies in Scandinavia and the rest of the world. We are continuously recognised and awarded internationally for setting new architectural standards, due to our strong focus on the functional, artistic and social value of architecture.

Today C.F. Møller has app. 300 employees. We have offices in Aarhus, Copenhagen, Aalborg, Oslo, Stockholm, Malmö, London and Berlin.



C.F. Møller Architects is owned by a partner group consisting of Klaus Toustrup, Lone Wiggers, Christian Dahle, Lone Bendorff, Klavs Hyttel, Julian Weyer, Mads Mandrup Hansen, Michael Kruse and Mårten Leringe.

Core Values

VISION

Our vision is to improve life for people and planet.

MISSION

Our mission is to holistically create solid, quality solutions based on Nordic values adapted to future global challenges.

ASPIRATION

We aspire to be global influencers by caring for the local context based on innovation, quality and sustainability.

PROMISES

We promise longevity and clever solutions in everything we create by delivering design that can pass the test of time and serve both clients and users with great value from start to finish.

SPIRIT

Our company team spirit is based on simplicity, clarity, honesty, openness and passion.

VALUES

Our values are strongly focused on professionalism, credibility, quality, innovation, agility and loyalty.



Contact

AARHUS

Europaplads 2, 11.
8000 Aarhus C, Denmark
T +45 8730 5300
cfmoller@cfmoller.com

COPENHAGEN

Hillerødgade 30A, 2. sal.
2200 Copenhagen N., Denmark
T +45 3288 7844
kbh@cfmoller.com

AALBORG

Strandvejen 17
9000 Aalborg, Denmark
T +45 9632 9797
aalborg@cfmoller.com

OSLO

Prinsens gate 2, 1.et.
0152 Oslo, Norway
T +47 2413 3400
oslo@cfmoller.com

LONDON

Telephone House,
69-77 Paul Street
London EC2A 4NW,
United Kingdom
T +44 (0)79 9001 3251
london@cfmoller.com

STOCKHOLM

Krukmakargatan 21
118 51 Stockholm, Sweden
T +46 (0)8 5557 6000
stockholm@cfmoller.com

MALMÖ

Stora Varvsgatan 6a
211 19 Malmö, Sweden
T +46 (0)4 0675 5750
malmo@cfmoller.com

BERLIN

Frizz23, Friedrichstrasse 23A
10969 Berlin, Germany
T +49 17 2160 0011
berlin@cfmoller.com

PRESS

Head of Communications
Peter Sikker Rasmussen
T +45 6193 6857
psr@cfmoller.com



cfmollerarchitects



cfmoller_architects



C.F. Møller Architects



www.cfmoller.com



**New school building for the
Copenhagen International
School designed to link the
school premises with the
public sphere in the urban
environment.**

#ImproveLifeforPeopleandPlanet